

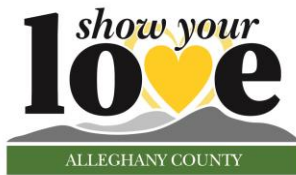


COVID-19 Situation Update for Alleghany County

April 9, 2021

This document is intended to provide a regular update on the local response to COVID-19 in our communities and timely, trended data related to COVID-19. This report will be published on Fridays.

Vaccinating Makes Everyone Safer - COVID-19 Vaccine Update



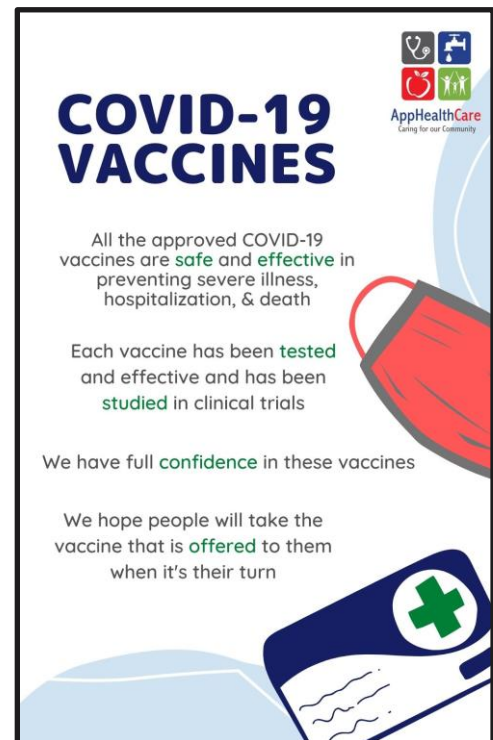
Vaccinating makes everyone safer. If you are interested in getting your vaccine, there is a spot for you. Visit our website to schedule an appointment or call us at (828) 795-1970. Show your love by getting a vaccine to help slow the spread of COVID-19 in our community.

Who is eligible for vaccines?

COVID-19 vaccine appointments are open for those who want a vaccine within the age requirements. The Pfizer vaccine is approved for people age 16-17 and all other vaccines are approved for 18 and older. Vaccine appointments will be added to our website as they are available based on vaccine supply so continue to check back regularly for additional appointments to be added.

How is equity being addressed in Alleghany County?

Equity is an important and significant factor to address during the COVID-19 pandemic, especially as it pertains to the COVID-19 vaccine. In Alleghany County, those who need help with transportation can use the [Alleghany in Motion \(AIM\)](#) transportation service to get to various destinations. For those who are in need of interpreters, we have interpreters available to help with your vaccine appointment. Also, some people are unable to leave their homes due to lack of accessibility, location, disability, etc. and we are able to offer vaccinations at someone's home by scheduled appointments.



Does Allegheny County offer transportation services during the pandemic?

[Allegheny in Motion \(AIM\)](#) is the county's public transportation system and provides transportation within and to destinations beyond Allegheny County including elderly and disabled transportation, general public transportation, and medical transportation including approved Medicaid appointments. Employment transportation is provided in Allegheny County only. Contact 336-372-8747 for questions.

COVID-19 Vaccine Data

How many doses of vaccine do we have?

First Doses (Data as of April 9, 2021)		
Week of April 5th Allocation	Total First Doses Accepted	Total First Doses Administered
100	3,410	3,237

Second Doses (Data as of April 9, 2021)		
Week of April 5th Allocation	Total Second Doses Accepted	Total Second Doses Administered
200	2,950	2,615

The total doses of vaccine received includes the vaccine that was transferred to us from the hospital.

Percent of Allegheny County Vaccinated (Data as of April 8, 2021)	
Partially Vaccinated	31.1%
Fully Vaccinated	23.7%

The vaccine will be offered **free of charge to everyone** whether or not you have health insurance. To learn more about the COVID-19 vaccine, visit our website [here](#) or NC DHHS's website [here](#).

Key Points

Case Updates

For the week of March 21-April 3 (graphs below), the number of new cases and those who are in quarantine increased.

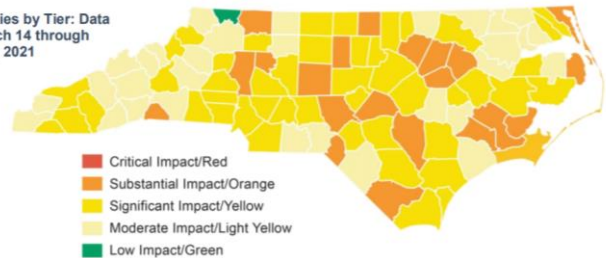
Statement from Alleghany Health

“We are continuing to provide a safe environment for our community members, to receive emergency care services where they live. Our staff are here to support and provide for our community’s healthcare needs on a 24/7 basis. With the addition of Urgent Care as a new service line, within the hospital clinic of Alleghany Health Service (in pilot mode), we are offering Urgent Care services Mon-Fri 8am-1pm. We have top notch providers and staff who are ready to care for you, during a medical emergency.” - statement from Alleghany Health

NC DHHS County Alert System Notes Low Impact for Alleghany County

In the latest update, Alleghany County is **GREEN** which notes low impact. This system outlines actions we can take to lessen the impact and spread in our community. You can read more about the [County Alert System on NC DHHS’s website](#).

NC Counties by Tier: Data from March 14 through March 27, 2021



We continue case investigation and contact tracing efforts to reduce the spread of COVID-19. If you receive a call from a member of our case investigation or contact tracing team, we urge you to cooperate and provide information that will help us conduct response efforts. You may receive a call from (844) 628-7223 or (828) 264-4995. It may also show up as “NC Outreach” or “Contact Tracing.” Your cell phone carrier may flag the call as spam. It is so important to answer the call of a contact tracer. It is a key tool in slowing the spread of this virus.

Testing

If you have COVID-19 symptoms or have been exposed to someone with COVID-19 (regardless of whether you have symptoms or not), we recommend you be tested. You can [check your symptoms](#) and determine if testing is needed. To find a testing site near you, visit [NC DHHS’s Find My Testing Place](#).

Turnaround Times for Testing remains between 2 and 4 days. NC DHHS provides data on testing turnaround times. This data is updated daily and can be found [here](#).

Free COVID-19 Testing at AppHealthCare by Appointment. We offer testing on Monday and Thursday each week unless otherwise noted. Please do not just show up for testing. We request that you schedule an appointment through our [website](#) or by calling our COVID-19 Call Center at (828) 795-1970.

Testing is also offered by appointment at Alleghany Family Practice at (336) 372-5606 and other local healthcare providers may offer testing as well.

Active Outbreaks and Clusters

Data is provided for outbreaks and clusters that are active and ongoing. The number of cases for outbreaks and clusters are current as of each Thursday at 9:00am. The case counts vary day by day as new cases are identified and as cases are moved in and out of isolation. This data may not match other reported data since this is a point in time. As we conduct outbreak and case investigations, the data included in this report are subject to change. For a current case count, visit the [AppHealthCare data dashboard](#), which is updated Monday through Friday by noon.

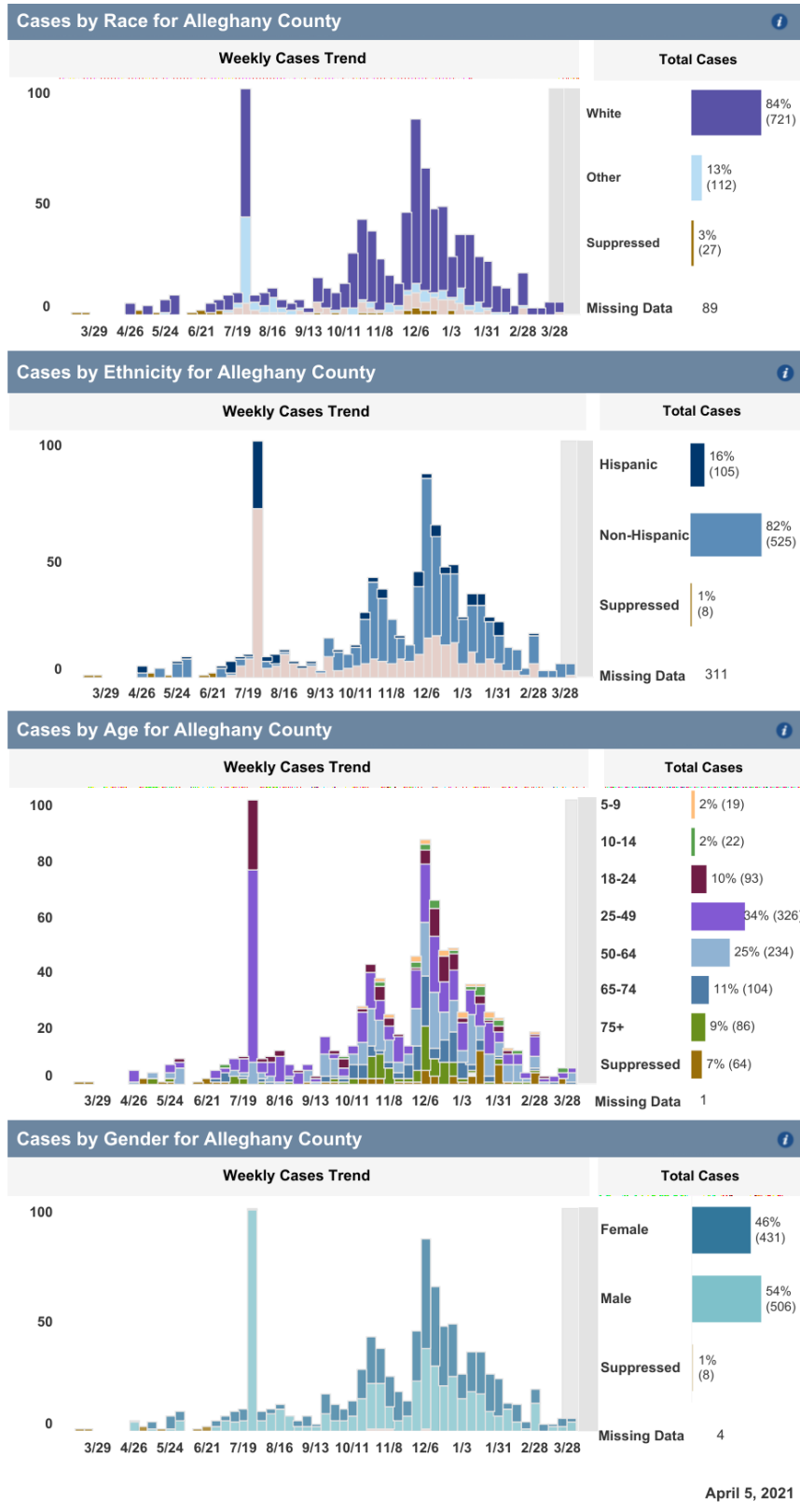
An outbreak is defined as two or more laboratory confirmed cases. A cluster is defined as a minimum of five cases with illness onsets or initial positive results within a 14-day period and plausible epidemiologic linkage between cases. An outbreak or cluster is considered over if 28 days have passed after the latest date of symptom onset in a symptomatic person or first date of specimen collection from the most recent asymptomatic person, whichever is later. Additional information on the [definitions of outbreaks and clusters](#) is provided by the North Carolina Department of Health & Human Services. NC DHHS also provides regularly updated information on [outbreaks and clusters](#).

Active Outbreaks & Clusters

Data is current as of Thursday, April 8th

Facility or Setting Type	Facility or Setting Name	Active Cases	Cumulative Cases	Last Positive Result
No active outbreaks/clusters at this time.				

Demographic Data from NC DHHS as of April 5th

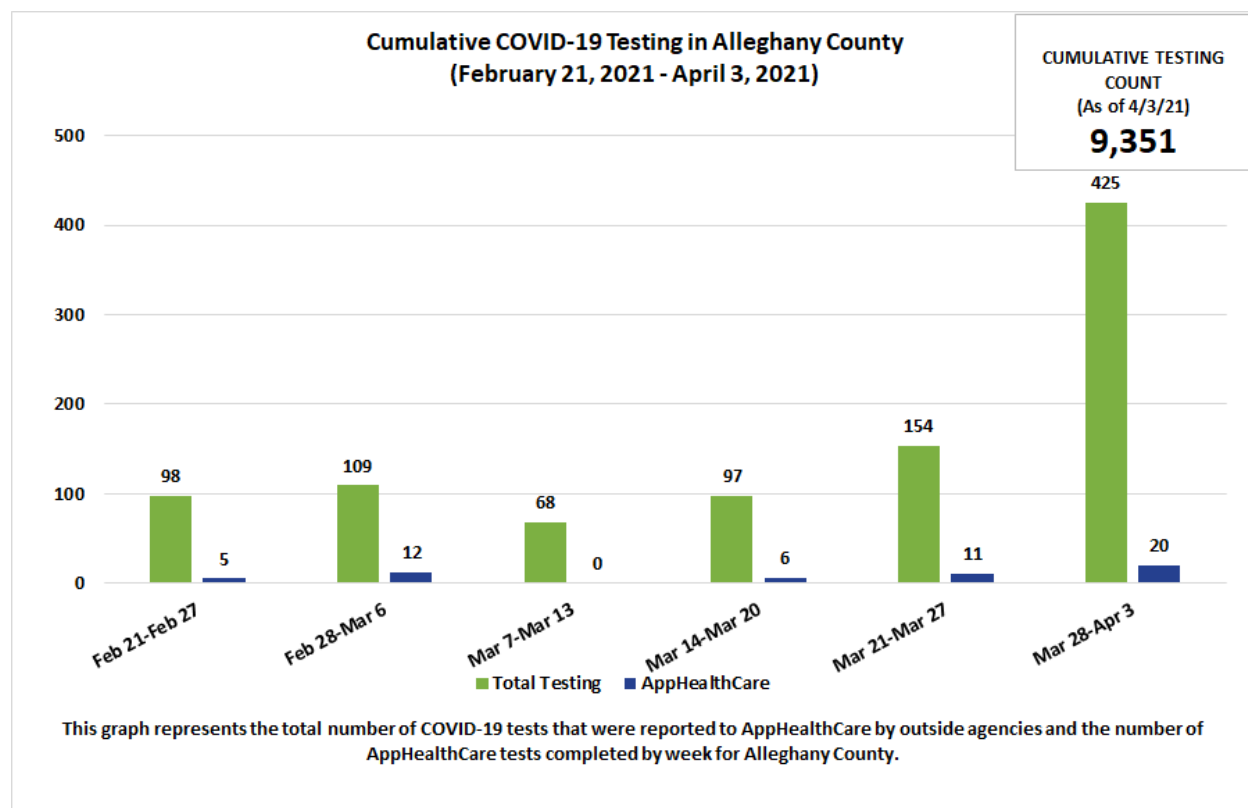


Data for Alleghany County

An important note about data context: The graphs below show the available data. Please carefully read the descriptions below the graph to understand the data limitations. The most current data is available on the [AppHealthCare dashboard](#), as the data below is past data trended.

Important Disclaimer About Data

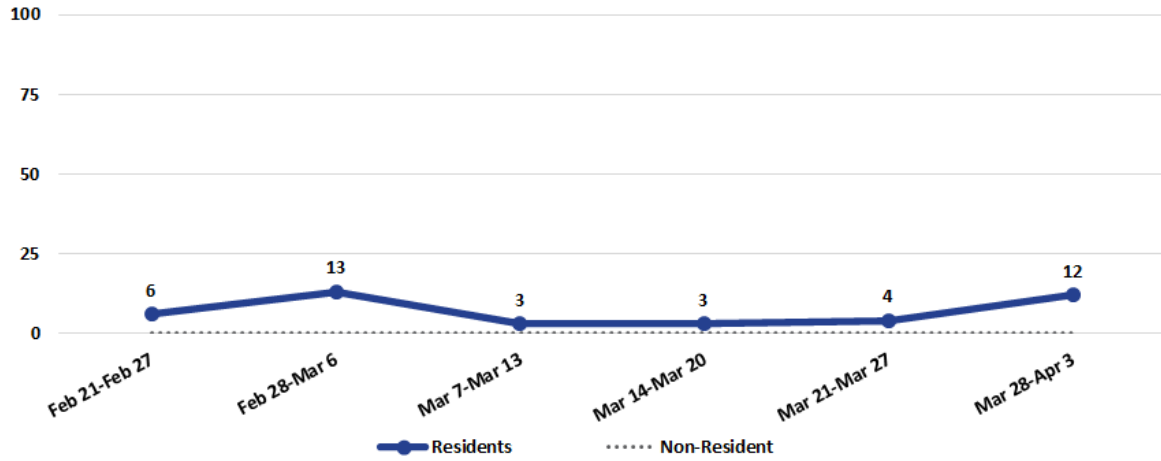
It is imperative that this report and the data contained within is understood in the appropriate context. Please, if you use this report, please be certain that the information included within is shared within the appropriate context. Doing otherwise may be damaging to the public health response efforts. There are multiple factors involved in addressing this virus, including compliance with public health control measures implemented by the local health director and referenced in NC GS 130A. These measures are imperative for limiting the spread of COVID-19. **AppHealthCare strongly advises that when data is shared for the purposes of educating the public or informing policy decisions, it should come directly from NC DHHS or AppHealthCare as it is presented with appropriate context from those directly involved in public health response.**



Cumulative Case Count by Week in Alleghany County (February 21, 2021 - April 3, 2021)

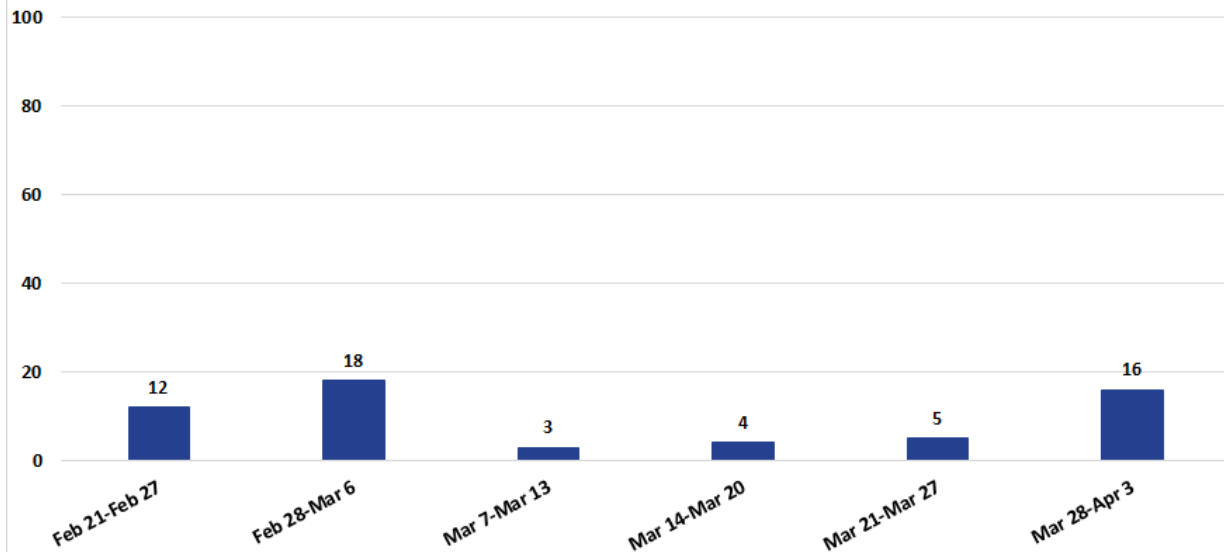
CUMULATIVE CASE
COUNT
(As of 4/3/21)

906



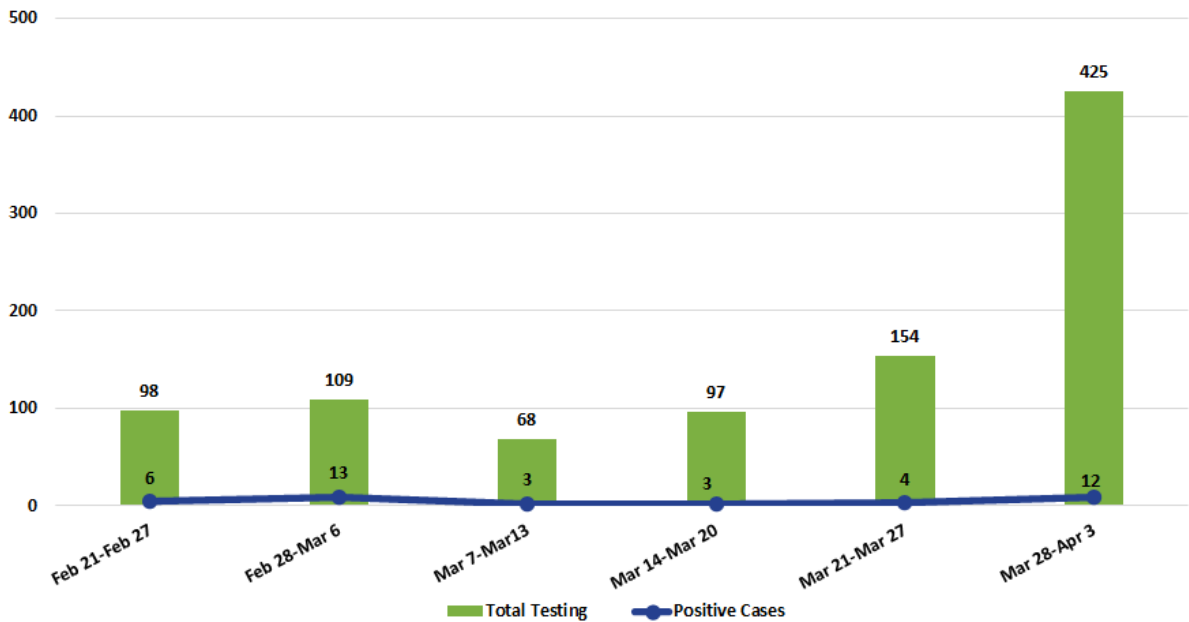
The solid navy blue line in this graph represents the number of positive COVID-19 cases among Alleghany County residents by week. This graph also shows the number of non-residents that have tested positive for COVID-19 but reside in another county.

Number of Active Positive Cases by Week in Alleghany County (February 21, 2021 - April 3, 2021)



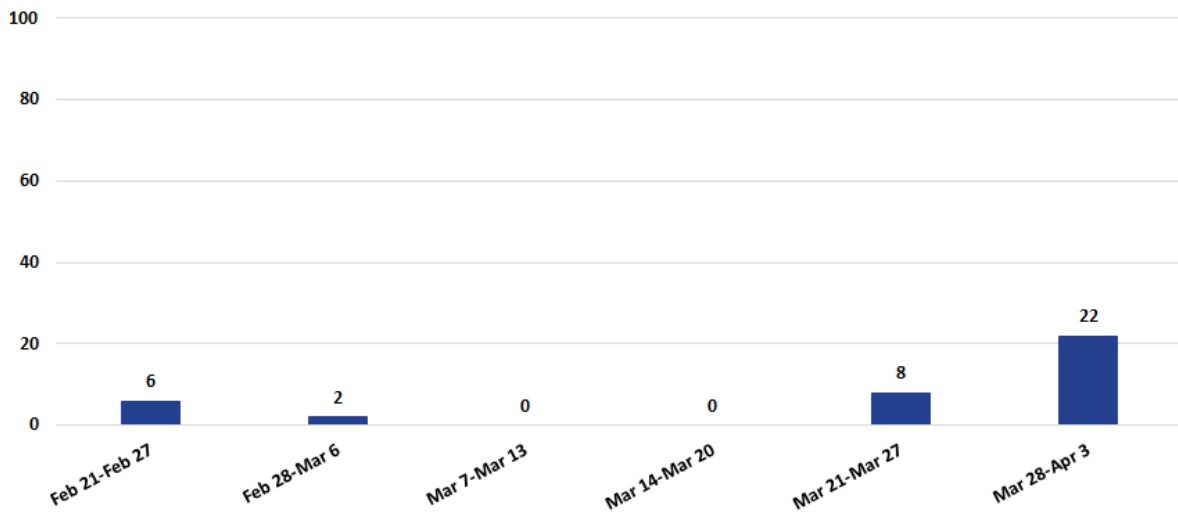
The graph represents the number of active COVID-19 positive cases by week in Alleghany County. A positive COVID-19 case is considered active for ten days after the initial positive test result.

**Total Weekly Tests Reported vs. Weekly Positive Case Count in Allegheny County
(February 21, 2021 - April 3, 2021)**



This graph represents the number of COVID-19 positive cases by week in Allegheny County compared to the total number of reported tests that were completed by AppHealthCare and outside agencies each week in Allegheny County.

**Number of People Being Actively Monitored by Week in Allegheny County
(February 21, 2021 - April 3, 2021)**



This graph represents the total number of Allegheny County residents that AppHealthCare staff have monitored due to being exposed to a confirmed COVID-19 case. Individuals are notified and asked to quarantine and monitor for symptoms for fourteen days.

Additional data can be found on [AppHealthCare's data dashboard](#). This data is updated each day around noon.

Alleghany (336) 372-5641 | Ashe (336) 246-9449 | Watauga (828) 264-4995

AppHealthCare COVID-19 Call Center (828) 795-1970

General COVID-19 Questions: preparedness@apphealth.com

Media inquiries: media@apphealth.com

www.AppHealthCare.com and follow us on Facebook & Twitter

