



COVID-19 Situation Update for Watauga County February 5, 2021

This document is intended to provide a regular update on the local response to COVID-19 in our communities and timely, trended data related to COVID-19. This report will be published on Fridays.

"This has been a very difficult year for so many dealing with this virus and the impacts it has had on everyone's daily lives. With vaccine being administered, this will be our best tool to slow the spread of the virus and fight this pandemic but it will take some time to get everyone vaccinated since we have limited amounts of vaccine. We are working very hard to get vaccine out to the community as quickly and efficiently as possible but with small amounts of vaccine, we are limited to the number we can vaccinate week to week. We appreciate everyone's patience and are hopeful we will receive more vaccine in the coming weeks," stated Jennifer Greene, Health Director, AppHealthCare.

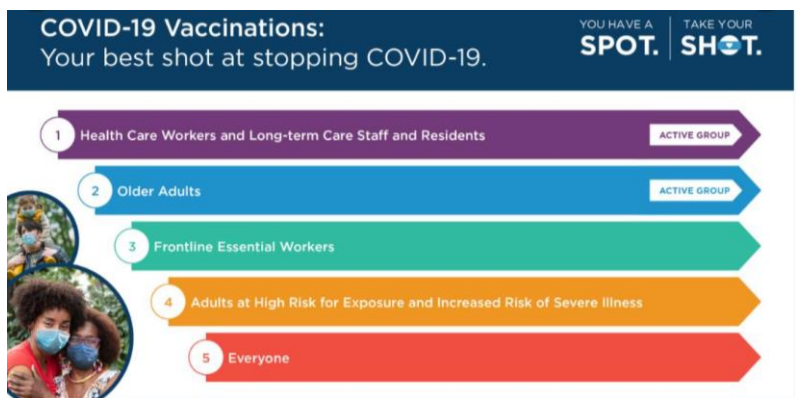


Vaccinating Makes Everyone Safer - COVID-19 Vaccine Update

Our next allocation of vaccine will include 200 first doses and 600 second doses for Watauga.

What phase are we in for Watauga County?

Group 1 and Group 2 are eligible for vaccine now. This includes health care workers with in-person patient contact, long-term care staff and residents—people in skilled nursing facilities, adult care homes, continuing care retirement communities and anyone 65 years or older, regardless of health status or living situation.



Mass Vaccination Event for Second Doses Only - February 6, 2021 at Watauga High School

A follow up mass vaccination event will be held February 6, 2021 at Watauga High School for those individuals who received their first dose at the January 16th event. These individuals have been contacted to schedule a time for their second dose. This event is for second doses only.

How many doses of vaccine do we have?

First Doses (Data as of February 5, 2021)		
First Doses Received This Week	Total First Doses Received	Total First Doses Administered
200	2,250 Moderna	2,090
	975 Pfizer	1,169*

*Pfizer vaccine vials can contain extra doses so this is the reason the administered doses is higher than the received doses.

Second Doses (Data as of February 5, 2021)		
Second Doses Received This Week	Total Second Doses Received	Total Second Doses Administered
400	1,600 Moderna	1,290
	975 Pfizer	0

The total doses of vaccine received includes vaccine that was transferred to us from the hospital.

People Eligible for Vaccine

This is an approximate number of those who are eligible to receive vaccine in Group 1 and Group 2 and have not been scheduled for an appointment. This number comes from the COVID-19 Interest Form list and is updated on our website weekly on Fridays.

People Eligible for Vaccine (Data as of February 5, 2021)	
Watauga	8,416

Interested in Getting a COVID-19 Vaccine?

We have launched a COVID-19 vaccine interest form for anyone interested in receiving the COVID-19 vaccine. Anyone can fill out the form regardless of which phase they will fit into. You can find the form on our website [here](#).

Want to Volunteer for a COVID-19 Vaccine Clinic?

If you are interested in volunteering your time to help with COVID-19 vaccine clinics in Alleghany, Ashe or Watauga County, please complete [this form](#).

The vaccine will be offered **free of charge to everyone** whether or not you have health insurance. To learn more about the COVID-19 vaccine, visit our website [here](#) or NC DHHS's website [here](#).

INTERESTED IN A COVID VACCINE?

Complete the interest form online at www.apphealthcare.com/covid-19-vaccinations.

If you need assistance, please call our Call Center at (828) 795-1970.

 AppHealthCare
Caring for our Community

Key Points

Case Updates

For the week of January 24-30 (graphs below), there was a small decrease in the number of new cases and the number of individuals in quarantine.

Hospitalizations

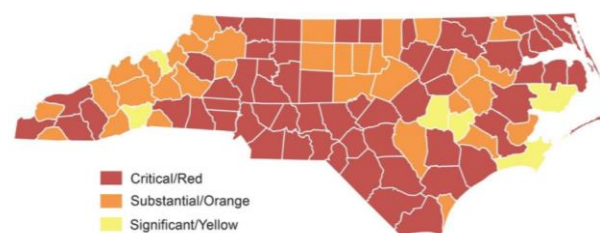
The number of hospitalizations decreased slightly this past week but we continue to watch this closely. Appalachian Regional Healthcare System is in phase three of a four-phase COVID-19 surge plan. Phase three means there is an advanced patient surge with an average of 25 positive COVID-19 patients hospitalized. We want to monitor this data point very closely because it is important we have hospital capacity for those who may need hospital care for things like a heart attack, stroke, car accident, etc.

NC DHHS County Alert System Notes

Substantial Community Spread for Watauga County

In the latest update, Watauga County is **ORANGE** which notes substantial community spread. This system outlines actions we can take to lessen the impact and spread in our community. You can read more about the [County Alert System on NC DHHS's website](#).

NC Counties by Tier: Data from January 17 through January 30, 2021



We continue case investigation and contact tracing efforts to reduce the spread of COVID-19. If you receive a call from a member of our case investigation or contact tracing team, we urge you to

cooperate and provide information that will help us conduct response efforts. You may receive a call from (844) 628-7223 or (828) 264-4995. It may also show up as “NC Outreach” or “Contact Tracing.” Your cell phone carrier may flag the call as spam. It is so important to answer the call of a contact tracer. It is a key tool in slowing the spread of this virus.

Personal Protective Equipment (PPE) levels remain stable in most areas.

Testing

If you have COVID-19 symptoms or have been exposed to someone with COVID-19, we recommend you be tested. You can [check your symptoms](#) and determine if testing is needed. To find a testing site near you, visit [NC DHHS's Find My Testing Place](#).

Turnaround Times for Testing remains between 2 and 4 days. NC DHHS provides data on testing turnaround times. This data is updated daily and can be found [here](#).

Free COVID-19 Testing at AppHealthCare by Appointment. We are offering testing on Mondays and Thursdays of each week. Please do not just show up for testing. We request that you schedule an appointment through our [website](#) or by calling our COVID-19 Call Center at (828) 795-1970.



Testing is also offered by appointment at [Appalachian Regional Healthcare System](#), [High Country Community Health Watauga Medical](#), [CVS Pharmacy in Boone](#), [Boone Drug](#) and other local healthcare providers may offer testing as well.

Active Outbreaks and Clusters

Data is provided for outbreaks and clusters that are active and ongoing. The number of cases for outbreaks and clusters are current as of each Thursday at 9:00am. The case counts vary day by day as new cases are identified and as cases are moved in and out of isolation. This data may not match other reported data since this is a point in time. As we conduct outbreak and case investigations, the data included in this report are subject to change. For a current case count, visit the [AppHealthCare data dashboard](#), which is updated daily by noon.

An outbreak is defined as two or more laboratory confirmed cases. A cluster is defined as a minimum of five cases with illness onsets or initial positive results within a 14-day period and plausible epidemiologic linkage between cases. An outbreak or cluster is considered over if 28 days have passed after the latest date of symptom onset in a symptomatic person or first date of specimen collection from the most

recent asymptomatic person, whichever is later. Additional information on the [definitions of outbreaks and clusters](#) is provided by the North Carolina Department of Health & Human Services. NC DHHS also provides regularly updated information on [outbreaks and clusters](#).

Active Outbreaks & Clusters <i>Data is current as of Thursday, February 4, 9:00am</i>				
Facility or Setting Type	Facility or Setting Name	Active Cases	Cumulative Cases	Last Positive Result
Long Term Care Facility	Glenbridge Health & Rehab	0	8 staff 2 residents 1 death	01/14/2021
Long Term Care Facility	Foley Center	0	22 staff 31 residents	01/22/2021
Childcare Facility	Greenway Baptist Child Development Center	0	9 children 10 staff	01/23/2021
Long Term Care Facility	Deerfield Ridge Assisted Living	5 staff 17 residents	8 staff 17 residents 1 death	02/03/2021
Residential Complex	Cottages of Boone	5	5	02/01/2021

Mitigation and Response Efforts

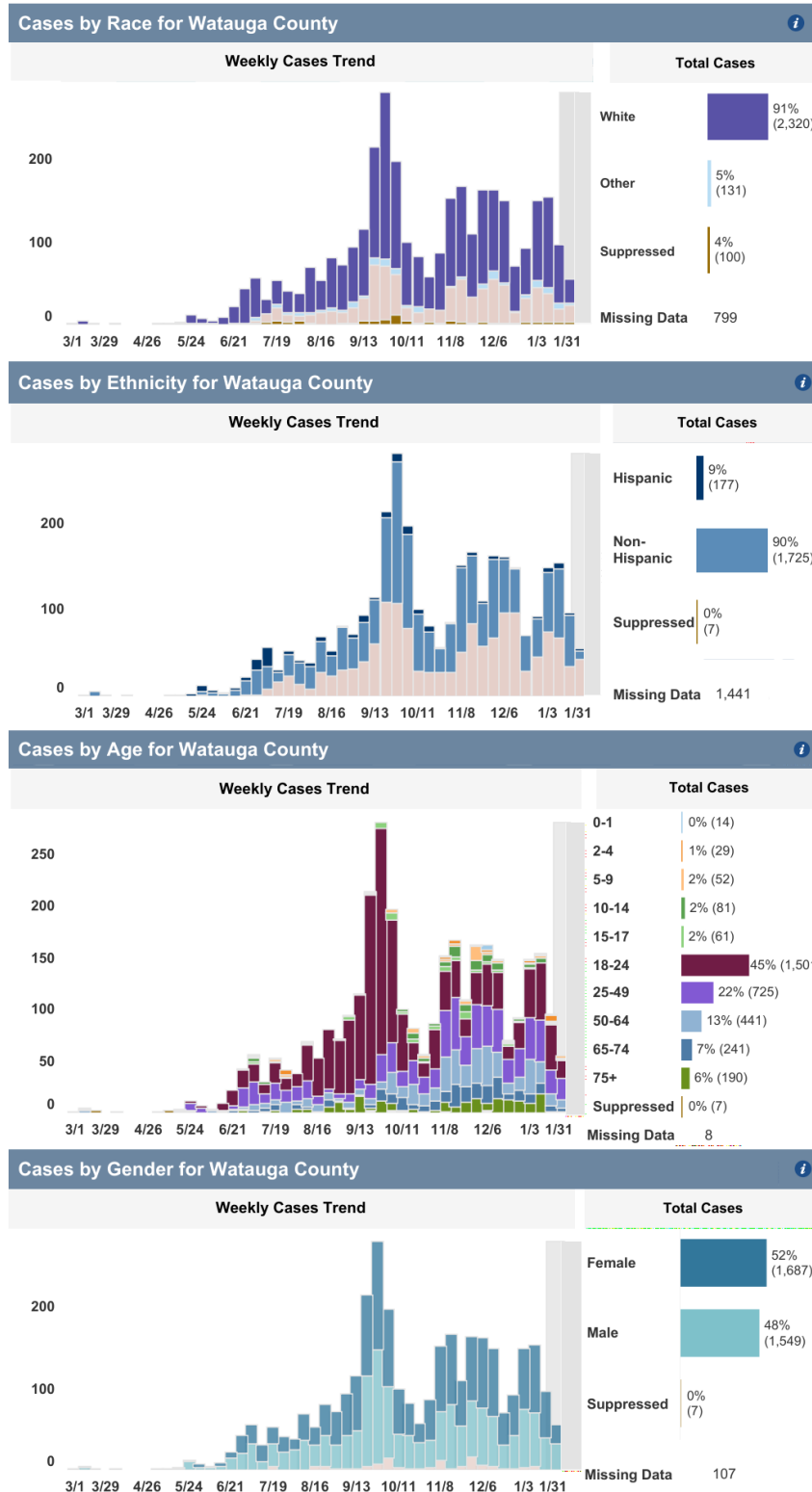
- Ongoing testing continues to monitor the health of residents in skilled nursing facilities
- Educational outreach on COVID-19 prevention with these facilities
- Positive cases are separated from others to allow for safe isolation
- Ongoing daily health monitoring is occurring at the facilities
- Monitoring of positive cases continues with public health staff
- App State and AppHealthCare review cases daily to ensure that staff and students get the support they need to safely isolate or quarantine and to support contact tracing efforts by public health staff
- Ongoing messaging continues from App State to campus about prevention measures and enforcement

App State is providing COVID-19 testing at no cost to students, faculty and staff each Wednesday and Saturday from noon - 5 p.m. App State Student Health Service also continues providing testing for students each weekday. Entry testing, as well as periodic testing throughout the semester, is required

for residence hall students, student athletes and other students as determined necessary during the Spring 2021 semester. App State is in the process of distributing five new washable, re-usable face coverings for all students, faculty and staff. The university has an application pending with the North Carolina Department of Health and Human Services (NCDHHS) to be a COVID-19 vaccination distribution center for community members as well as students, faculty and staff. [App State has a dedicated COVID-19 website](#) with guidance, testing schedule information, regular updates and data for the Appalachian community.

Demographic Data from NC DHHS as of February 1st

NC DHHS updates this data daily and can be found on [NC DHHS's website](#).



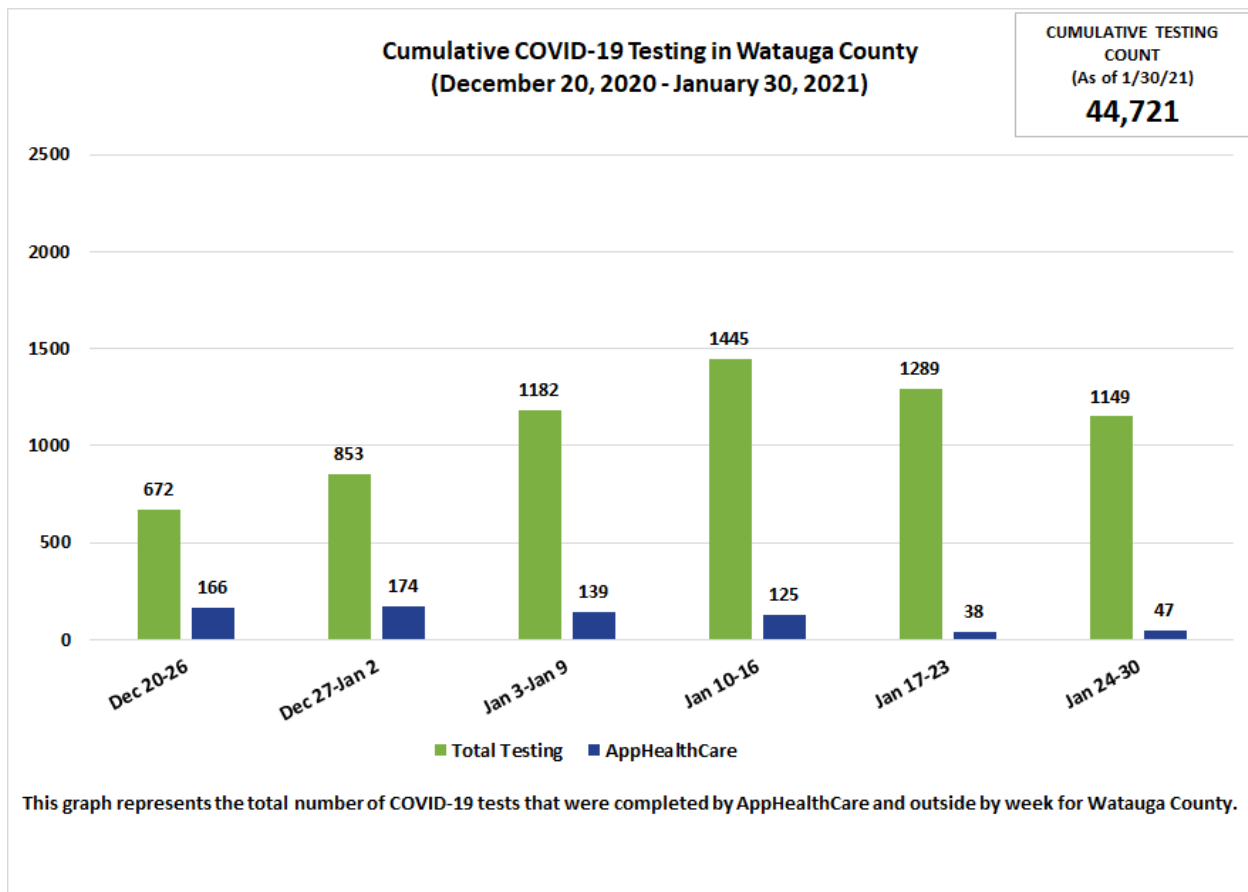
February 1, 2021

Data for Watauga County

An important note about data context: The graphs below show the available data. Please carefully read the descriptions below the graph to understand the data limitations. The most current data is available on the [AppHealthCare dashboard](#), as the data below is past data trended.

Important Disclaimer About Data

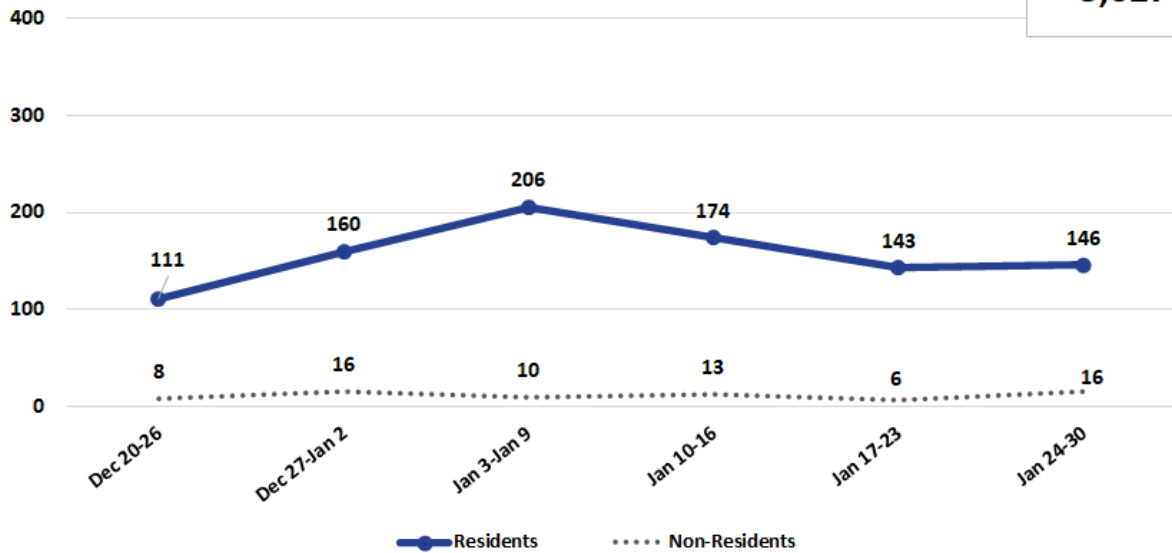
It is imperative that this report and the data contained within is understood in the appropriate context. Please, if you use this report, please be certain that the information included within is shared within the appropriate context. Doing otherwise may be damaging to the public health response efforts. There are multiple factors involved in addressing this virus, including compliance with public health control measures implemented by the local health director and referenced in NC GS 130A. These measures are imperative for limiting the spread of COVID-19. **AppHealthCare strongly advises that when data is shared for the purposes of educating the public or informing policy decisions, it should come directly from NC DHHS or AppHealthCare as it is presented with appropriate context from those directly involved in public health response.**



**Cumulative Case Count by Week in Watauga County
(December 20, 2020 - January 30, 2021)**

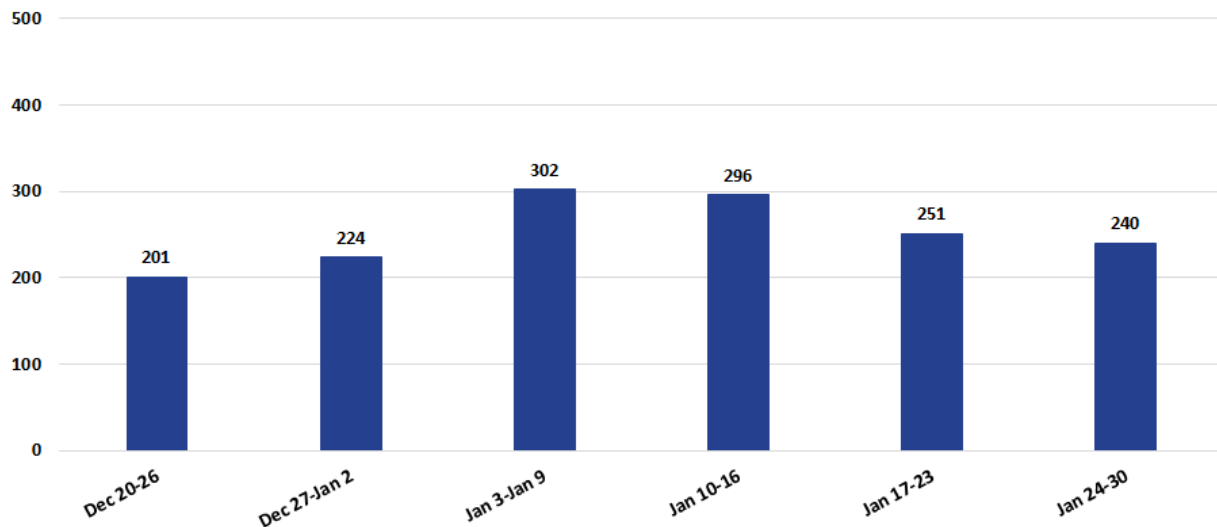
CUMULATIVE CASE
COUNT
(As of 1/30/21)

3,627



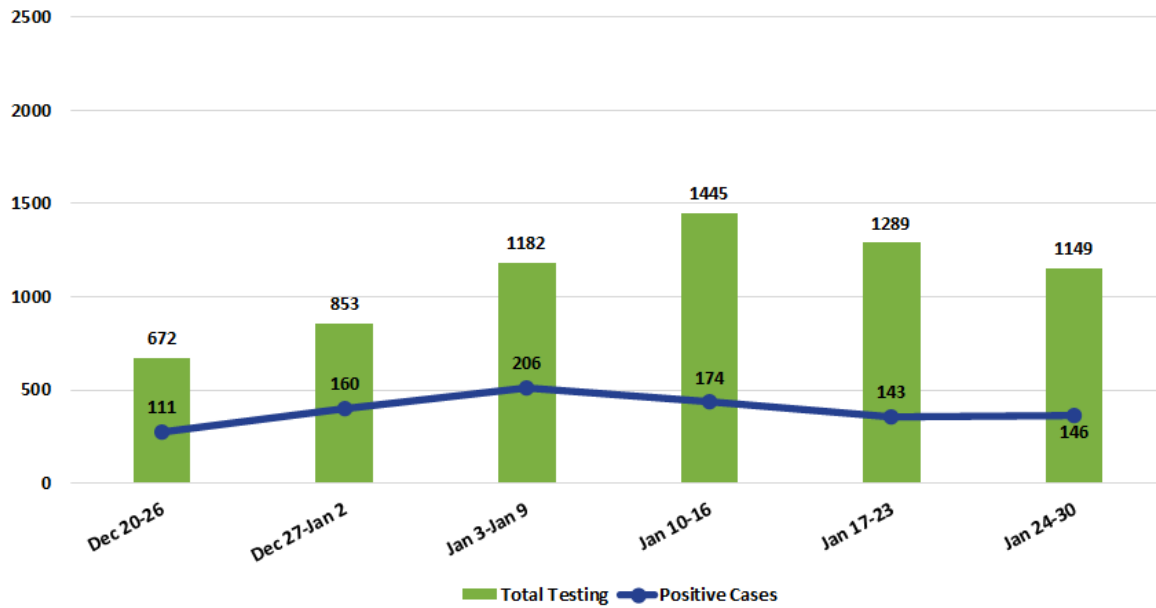
The solid navy blue line in this graph represents the number of positive COVID-19 cases among Watauga County residents by week. This graph also shows the number of non-residents that have tested positive for COVID-19 but reside outside Watauga County.

**Number of Active Positive Cases by Week in Watauga County
(December 20, 2020 - January 30, 2021)**



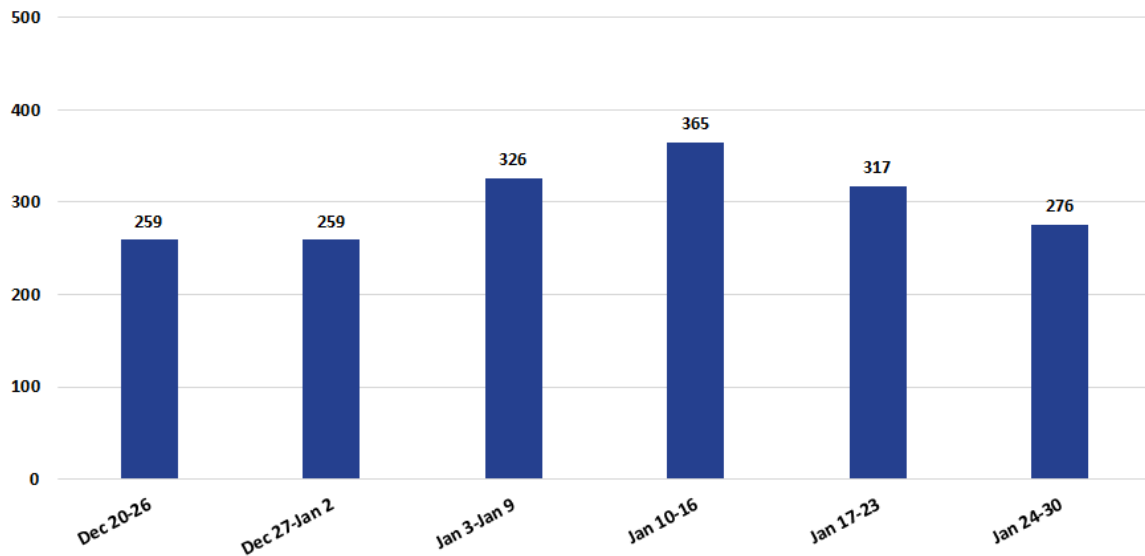
This graph represents the number of active COVID-19 positive cases by week in Watauga County. A positive COVID-19 case is considered active for a total of ten days after the initial positive test result.

**Total Weekly Tests Reported vs. Weekly Positive Case Count in Watauga County
(December 20, 2020 - January 30, 2021)**



This graph represents the number of COVID-19 positive cases by week compared to the total number of reported tests that were completed by AppHealthCare and outside agencies each week.

**Number of People Being Actively Monitored by Week in Watauga County
(December 20, 2020 - January 30, 2021)**



This graph represents the total number of Watauga County residents that AppHealthCare staff have monitored due to being exposed to a confirmed COVID-19 case. Individuals are notified and asked to quarantine and monitor for symptoms for fourteen days.

App State cumulative testing as of week ending January 31, 2021. These totals include tests performed at Student Health Service and from pop-up test events contracted with Mako Medical.

On-Campus Tests	Positive Tests	% Positive Cases
5,024	132	2.6%

Date ▾ (Week ending)	On-Campus Tests	Positive Tests	% Positive Cases
Jan 31, 2021	1,385	29	2.1%
Jan 24, 2021	1,548	50	3.2%
Jan 17, 2021	1,228	27	2.2%
Jan 10, 2021	863	26	3.0%

Additional data can be found on [AppHealthCare's data dashboard](#). This data is updated each day around noon.

Alleghany (336) 372-5641 | Ashe (336) 246-9449 | Watauga (828) 264-4995

AppHealthCare COVID-19 Call Center (828) 795-1970

General COVID-19 Questions: preparedness@apphealth.com

Media inquiries: media@apphealth.com

www.AppHealthCare.com and follow us on Facebook & Twitter

