



COVID-19 Situation Update for Ashe County

February 19, 2021

This document is intended to provide a regular update on the local response to COVID-19 in our communities and timely, trended data related to COVID-19. This report will be published on Fridays.

"This week we have experienced delays in our vaccine shipments due to weather and shipping delays out of our control. Unfortunately, this has forced us to reschedule appointments, and we apologize for this inconvenience as we know so many are eager to receive their vaccine. We will now administer doses allocated for this week and next week's allocation amounts by March 1st. We will continue to work diligently and efficiently to get shots in arms. We appreciate everyone's patience and understanding," stated Jennifer Greene, Health Director, AppHealthCare.

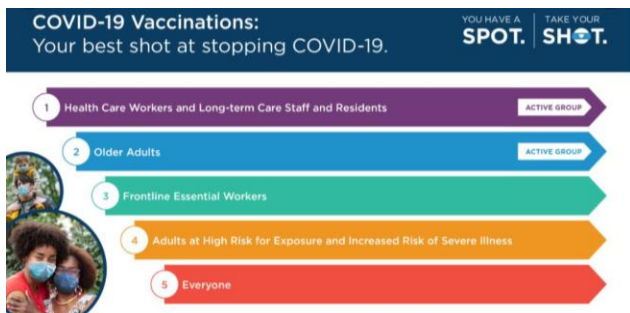


Vaccinating Makes Everyone Safer - COVID-19 Vaccine Update

Our next allocation of vaccine will include 500 first doses of Moderna. Our next allocation will not include a second dose shipment.

What phase are we in for Ashe County?

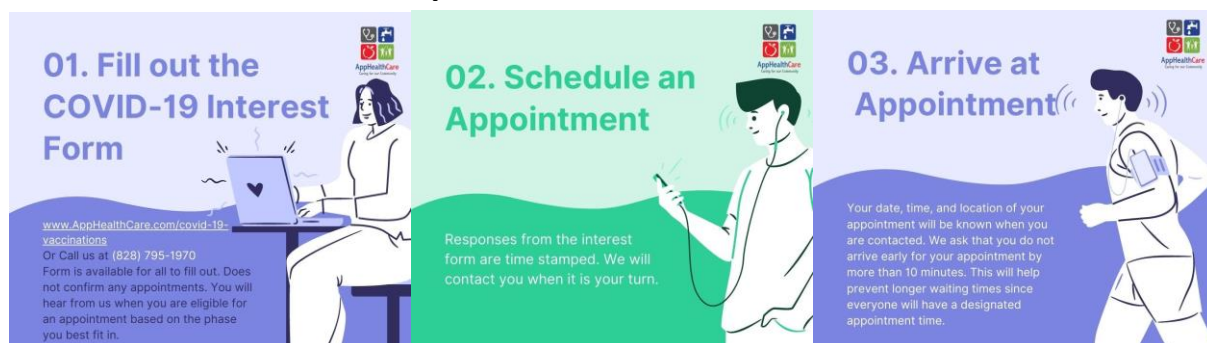
Group 1 and Group 2 are eligible for vaccine now. This includes health care workers with in-person patient contact, long-term care staff and residents—people in skilled nursing facilities, adult care homes, continuing care retirement communities and anyone 65 years or older, regardless of health status or living situation.



Education and Childcare Eligible for Vaccine Beginning February 24th

Beginning February 24th, education and childcare staff (Pre-K through 12th grade) will be eligible for vaccine. Our vaccine allocation, in addition to the county's allocation to other vaccinating providers overall has increased, so collectively, we will have more doses to administer and begin to offer vaccine to education and childcare staff next week. If there is someone who is eligible for a vaccine in Group 1 or Group 2 and who would like their vaccine, we will still prioritize these individuals.

Steps to Get a COVID-19 Vaccine



COVID-19 Vaccine Data

How many doses of vaccine do we have?

First Doses (Data as of February 19, 2021)		
Week of Feb. 15th Allocation	Total First Doses Received	Total First Doses Administered
900	2,200	2,200

Second Doses (Data as of February 19, 2021)		
Week of Feb. 15th Allocation	Total Second Doses Received	Total Second Doses Administered
500	1,760	1,220

The total doses of vaccine received includes vaccine that was transferred to us from the hospital.

People Eligible for Vaccine

This is an approximate number of those who are eligible to receive vaccines in Group 1 and Group 2. These are individuals who remain on our interest form list and who we have not yet reached out to to schedule an appointment.

People Eligible for Vaccine (Data as of February 19, 2021)	
Ashe	2,628

Want to Volunteer for a COVID-19 Vaccine Clinic?

If you are interested in volunteering your time to help with COVID-19 vaccine clinics in Alleghany, Ashe or Watauga County, please complete [this form](#).

The vaccine will be offered **free of charge to everyone** whether or not you have health insurance. To learn more about the COVID-19 vaccine, visit our website [here](#) or NC DHHS's website [here](#).

Key Points

Case Updates

For the week of February 7-13 (graphs below), there were decreases in new cases and the number of individuals in quarantine.

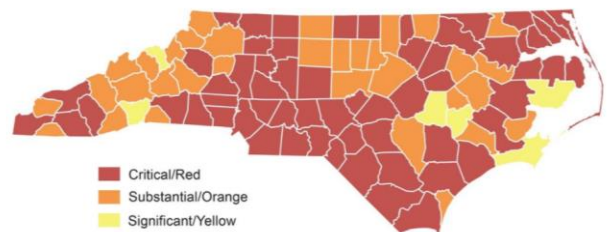
Statement from Ashe Memorial Hospital

As COVID-19 continues to impact our neighbors and surrounding counties, we encourage everyone to do their part to help reduce the spread of COVID-19 by wearing a mask, washing their hands, and social distancing whenever possible. The safety and well-being of our community is our top priority. We have protocols in place to ensure that we are able to meet the needs of our patients and our community.

NC DHHS County Alert System Notes Substantial Community Spread for Ashe County

In the latest update, Ashe County is **ORANGE** which notes substantial community spread. This system outlines actions we can take to lessen the impact and spread in our community. You can read more about the [County Alert System on NC DHHS's website](#).

NC Counties by Tier: Data from January 17 through January 30, 2021



We continue case investigation and contact tracing efforts to reduce the spread of COVID-19. If you receive a call from a member of our case investigation or contact tracing team, we urge you to cooperate and provide information that will help us conduct response efforts. You may receive a call from (844) 628-7223 or (828) 264-4995. It may also show up as “NC Outreach” or “Contact Tracing.” Your cell phone carrier may flag the call as spam. It is so important to answer the call of a contact tracer. It is a key tool in slowing the spread of this virus.

Personal Protective Equipment (PPE) levels remain stable in most areas.

Testing

If you have COVID-19 symptoms or have been exposed to someone with COVID-19, we recommend you be tested. You can [check your symptoms](#) and determine if testing is needed. To find a testing site near you, visit [NC DHHS's Find My Testing Place](#).

Turnaround Times for Testing remains between 2 and 4 days. NC DHHS provides data on testing turnaround times. This data is updated daily and can be found [here](#).

Free COVID-19 Testing at AppHealthCare by Appointment. Next week we will only be offering testing on Monday due to prioritizing vaccine administration. Please do not just show up for testing. We request that you schedule an appointment through our [website](#) or by calling our COVID-19 Call Center at (828) 795-1970.



Testing is also offered by appointment at Mountain Family Care Center (336) 846-6322 (located on the campus of Ashe Memorial Hospital), [CVS Pharmacy in West Jefferson](#), [Ashe Pediatrics](#) and other local healthcare providers may offer testing as well.

Active Outbreaks and Clusters

Data is provided for outbreaks and clusters that are active and ongoing. The number of cases for outbreaks and clusters are current as of each Thursday at 9:00am. The case counts vary day by day as new cases are identified and as cases are moved in and out of isolation. This data may not match other reported data since this is a point in time. As we conduct outbreak and case investigations, the data included in this report are subject to change. For a current case count, visit the [AppHealthCare data dashboard](#), which is updated daily by noon.

An outbreak is defined as two or more laboratory confirmed cases. A cluster is defined as a minimum of five cases with illness onsets or initial positive results within a 14-day period and plausible epidemiologic linkage between cases. An outbreak or cluster is considered over if 28 days have passed after the latest date of symptom onset in a symptomatic person or first date of specimen collection from the most recent asymptomatic person, whichever is later. Additional information on the [definitions of outbreaks and clusters](#) is provided by the North Carolina Department of Health & Human Services. NC DHHS also provides regularly updated information on [outbreaks and clusters](#).

Active Outbreaks & Clusters

Data is current as of Thursday, February 18, 9:00am

Facility or Setting Type	Facility or Setting Name	Active Cases	Cumulative Cases	Last Positive Result
Long Term Care Facility	Margate Health & Rehab	0	59 staff 89 residents	02/08/2021

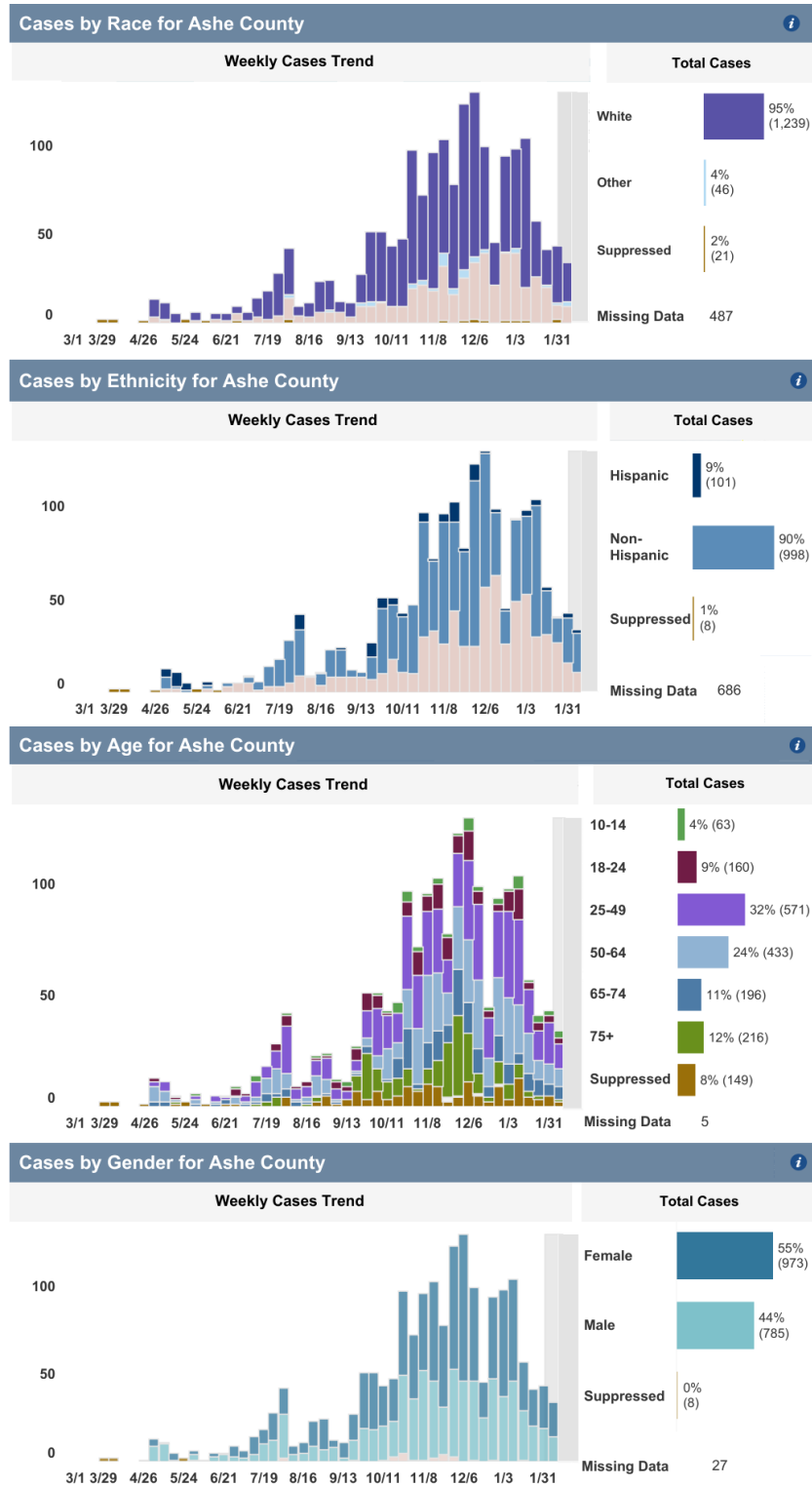
			18 deaths	
Long Term Care Facility	RHA Ridgecrest	0	3 staff	01/26/2021

Mitigation and Response Efforts

- Ongoing testing continues to monitor the health of residents in skilled nursing facilities
- Educational outreach on COVID-19 prevention with these facilities
- Positive cases are separated from others to allow for safe isolation
- Ongoing daily health monitoring is occurring at the facilities
- Monitoring of positive cases continues with public health staff

Demographic Data from NC DHHS as of February 15th

NC DHHS updates this data daily and can be found on [NC DHHS's website](#).



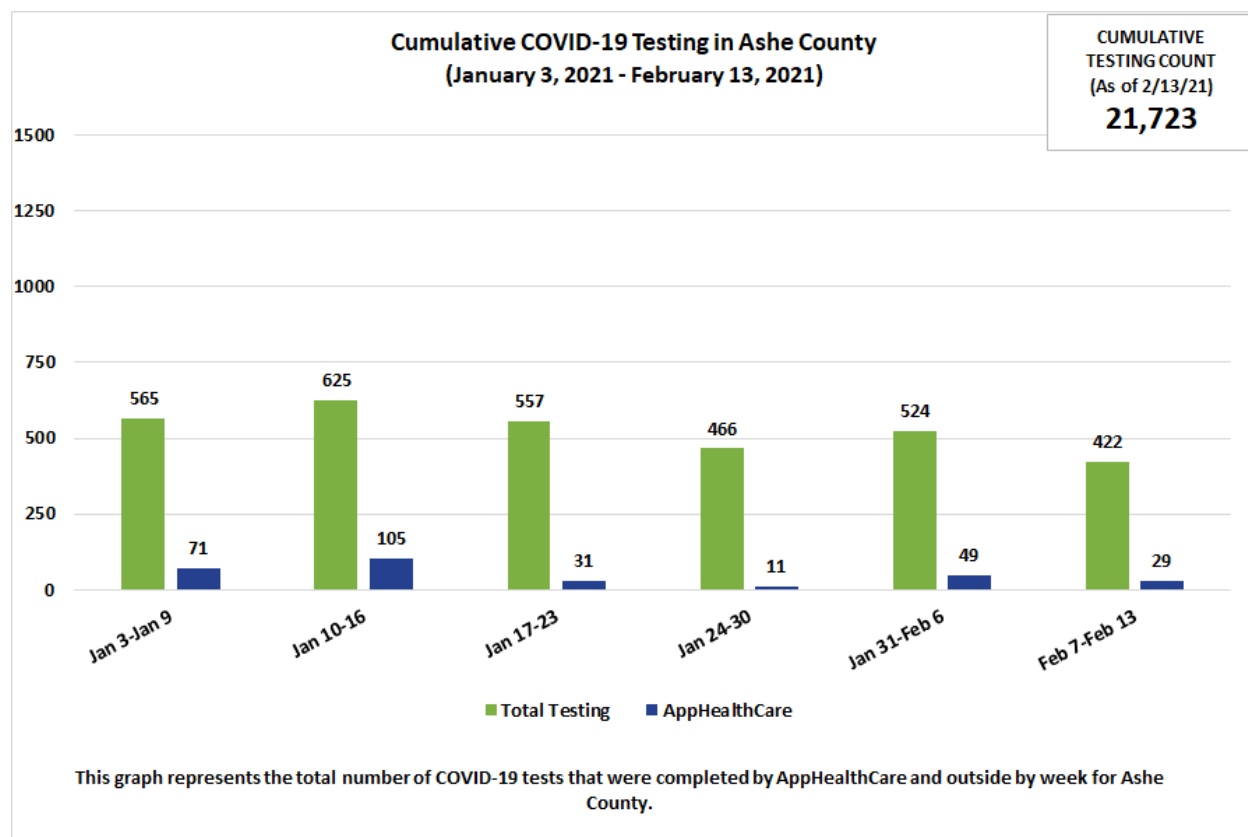
February 15, 2021

Data for Ashe County

An important note about data context: The graphs below show the available data. Please carefully read the descriptions below the graph to understand the data limitations. The most current data is available on the [AppHealthCare dashboard](#), as the data below is past data trended.

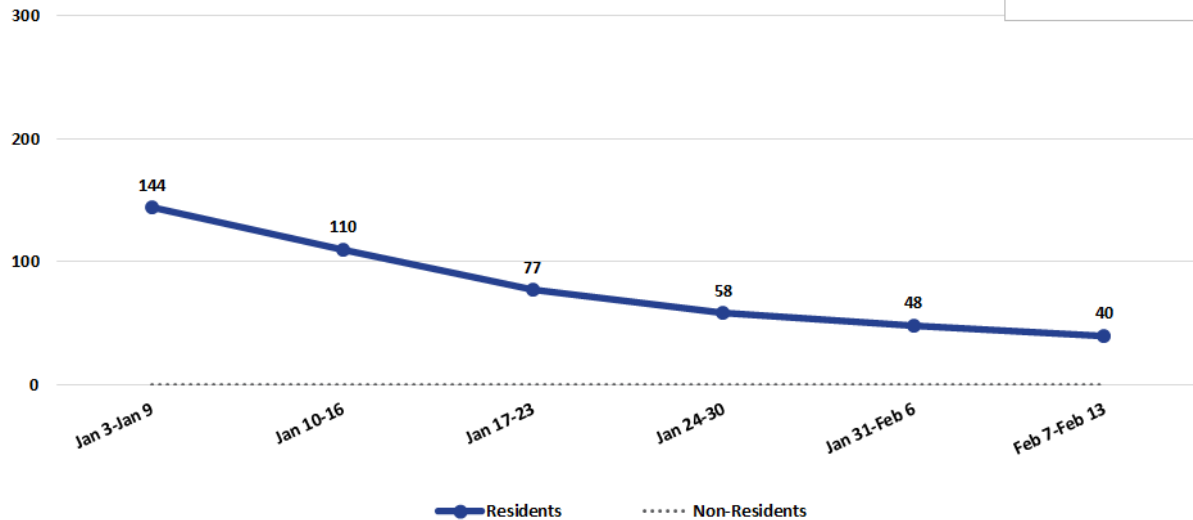
Important Disclaimer About Data

It is imperative that this report and the data contained within is understood in the appropriate context. Please, if you use this report, please be certain that the information included within is shared within the appropriate context. Doing otherwise may be damaging to the public health response efforts. There are multiple factors involved in addressing this virus, including compliance with public health control measures implemented by the local health director and referenced in NC GS 130A. These measures are imperative for limiting the spread of COVID-19. **AppHealthCare strongly advises that when data is shared for the purposes of educating the public or informing policy decisions, it should come directly from NC DHHS or AppHealthCare as it is presented with appropriate context from those directly involved in public health response.**



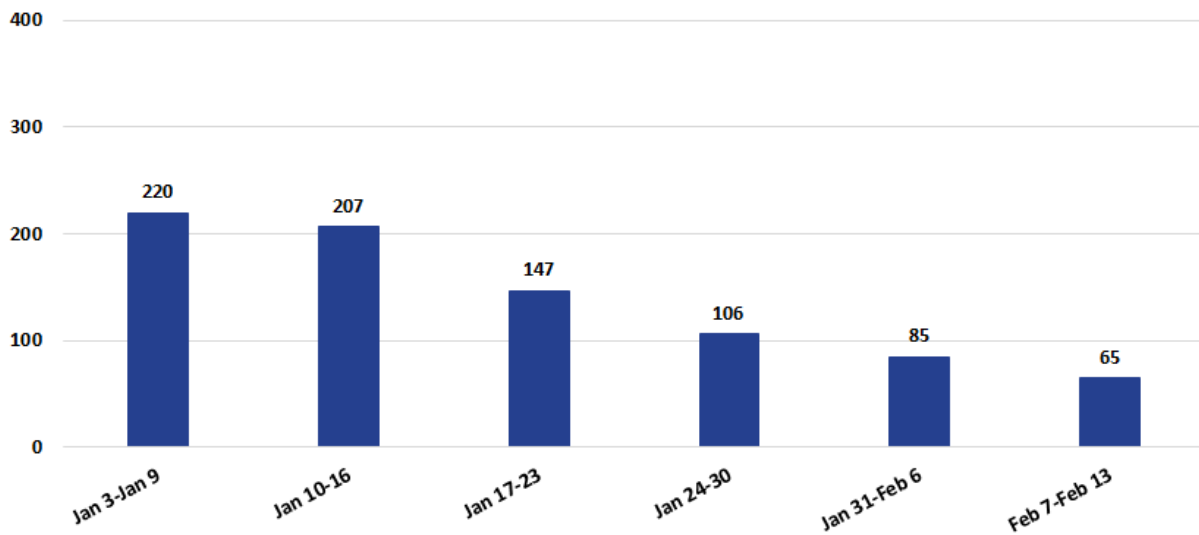
Cumulative Case Count by Week in Ashe County
(January 3, 2021 - February 13, 2021)

CUMULATIVE CASE COUNT
(As of 2/13/21)
1,952



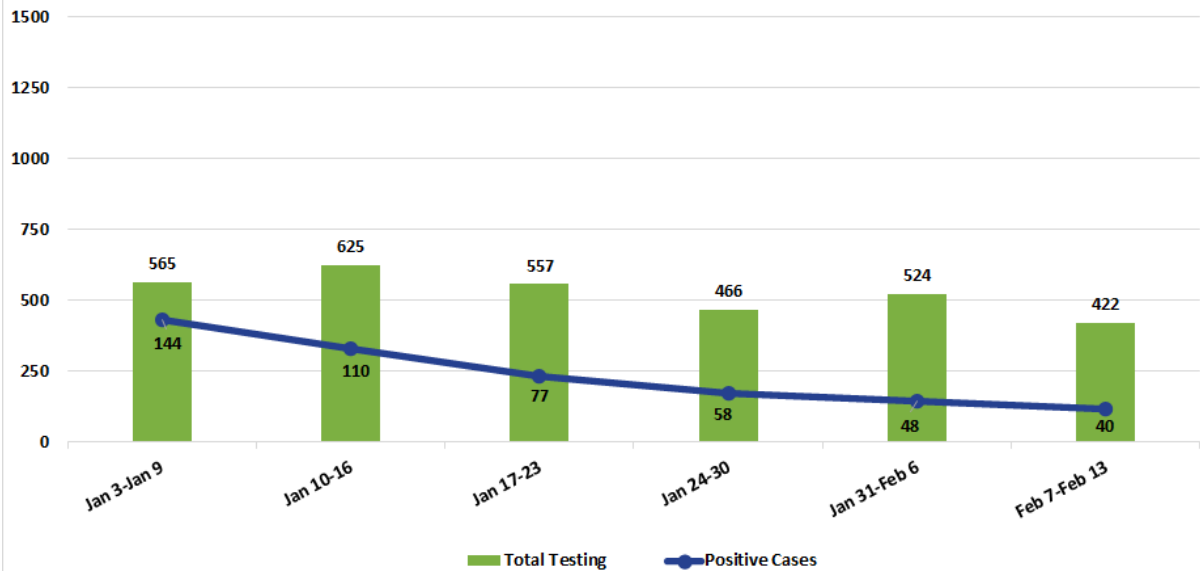
The solid navy blue line in this graph represents the number of positive COVID-19 cases among Ashe County residents by week. This graph also shows the number of non-residents that have tested positive for COVID-19 but reside in another county.

Number of Active Positive Cases by Week in Ashe County
(January 3, 2021 - February 13, 2021)



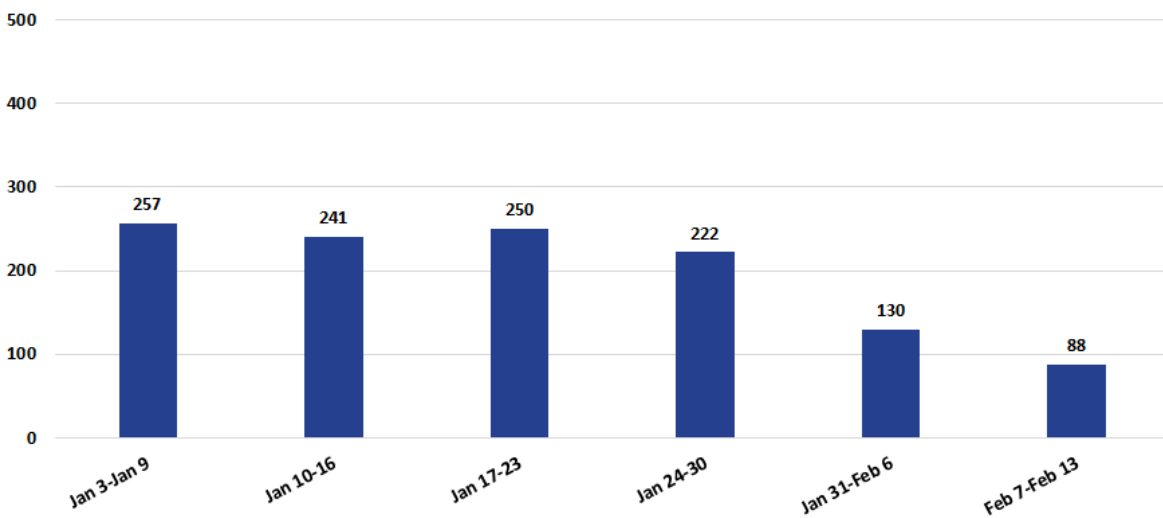
The graph represents the number of active COVID-19 positive cases by week in Ashe County. A positive COVID-19 case is considered active for ten days after the initial positive test result.

**Total Weekly Tests Reported vs. Weekly Positive Case Count in Ashe County
(January 3, 2021 - February 13, 2021)**



This graph represents the number of COVID-19 positive cases by week in Ashe County compared to the total number of reported tests that were completed by AppHealthCare and outside agencies each week in Ashe County.

**Number of People Being Actively Monitored by Week in Ashe County
(January 3, 2021 - February 13, 2021)**



This graph represents the total number of Ashe County residents that AppHealthCare staff have monitored due to being exposed to a confirmed COVID-19 case. Individuals are notified and asked to quarantine and monitor for symptoms for fourteen days.

Additional data can be found on [AppHealthCare's data dashboard](#). This data is updated each day around noon.

Alleghany (336) 372-5641 | Ashe (336) 246-9449 | Watauga (828) 264-4995

AppHealthCare COVID-19 Call Center (828) 795-1970

General COVID-19 Questions: preparedness@apphealth.com

Media inquiries: media@apphealth.com

www.AppHealthCare.com and follow us on Facebook & Twitter

