

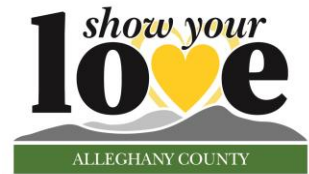


COVID-19 Situation Update for Alleghany County

February 26, 2021

This document is intended to provide a regular update on the local response to COVID-19 in our communities and timely, trended data related to COVID-19. This report will be published on Fridays.

"We are excited to be able to support vaccination efforts for teachers, staff, and childcare workers in our area starting this week. Thankfully, we have been able to make major progress on our waiting list for older adults and will continue to prioritize them as we move forward. Everyone will have a spot to take their shot," stated Jennifer Greene, Health Director, AppHealthCare.



Vaccinating Makes Everyone Safer - COVID-19 Vaccine Update

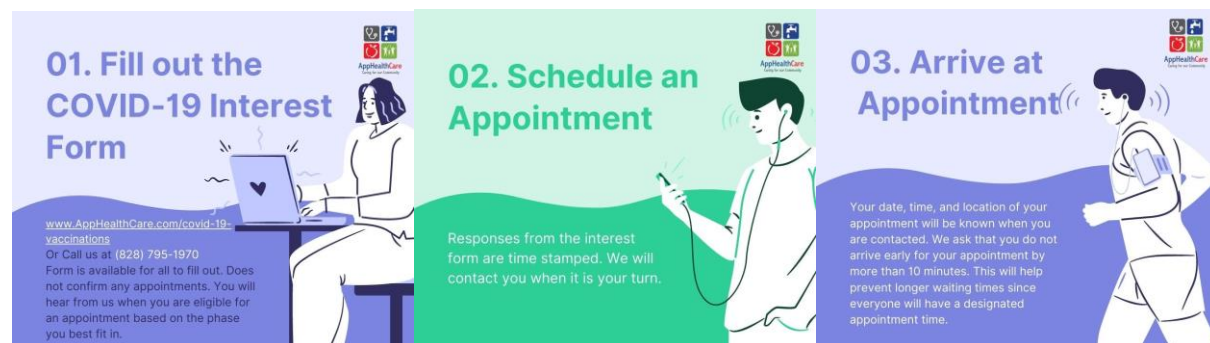
Our vaccine allocation for the week of March 1st will include 200 first doses and 100 second doses of Moderna.

What phase are we in for Alleghany County?

The active groups for vaccination are health care workers with in-person patient contact, long-term care staff and residents—people in skilled nursing facilities, adult care homes, continuing care retirement communities (Group 1), anyone 65 years or older, regardless of health status or living situation (Group 2) and child care and PreK-12 school staff (Group 3).



Steps to Get a COVID-19 Vaccine



COVID-19 Vaccine Data

How many doses of vaccine do we have?

First Doses (Data as of February 25, 2021)		
Week of Feb. 22nd Allocation	Total First Doses Received	Total First Doses Administered
200	2,520	2,334

Second Doses (Data as of February 25, 2021)		
Week of Feb. 22nd Allocation	Total Second Doses Received	Total Second Doses Administered
400	1,700	1,556

The total doses of vaccine received includes the vaccine that was transferred to us from the hospital.

People Eligible for Vaccine

This is an approximate number of those who are eligible to receive vaccines in Group 1 and Group 2. These are individuals who remain on our interest form list and who we have not yet reached out to to schedule an appointment.

People Eligible for Vaccine (Data as of February 25, 2021)	
Alleghany	208

The vaccine will be offered **free of charge to everyone** whether or not you have health insurance. To learn more about the COVID-19 vaccine, visit our website [here](#) or NC DHHS's website [here](#).

Key Points

Case Updates

For the week of February 14-20 (graphs below), the number of new cases and those are in quarantine decreased.

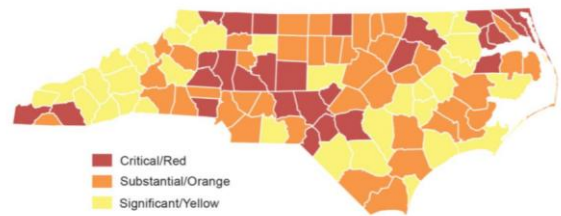
Hospitalizations

“We are continuing to provide a safe environment for our community members, to receive emergency care services where they live. We received our first doses of the Moderna Covid-19 vaccine, to begin vaccinating our front line workers the week of December 21st, and we are continuing to vaccinate all eligible staff per the state guidelines that have been established. This is just another way we can provide safe care to our community members! Rest assured we are prepared should you need to seek emergency care services here at Alleghany Health. We have top notch providers and staff who are ready to care for you, during a medical emergency.” -statement from Alleghany Health

NC DHHS County Alert System Notes Critical Community Spread for Alleghany County

In the latest update, Alleghany County is **RED** which notes critical community spread. This system outlines actions we can take to lessen the impact and spread in our community. You can read more about the [County Alert System on NC DHHS's website](#).

NC Counties by Tier: Data from January 31 through February 13, 2021



We continue case investigation and contact tracing efforts to reduce the spread of COVID-19. If you receive a call from a member of our case investigation or contact tracing team, we urge you to cooperate and provide information that will help us conduct response efforts. You may receive a call from (844) 628-7223 or (828) 264-4995. It may also show up as “NC Outreach” or “Contact Tracing.” Your cell phone carrier may flag the call as spam. It is so important to answer the call of a contact tracer. It is a key tool in slowing the spread of this virus.

Personal Protective Equipment (PPE) levels remain stable in most areas.

Testing

If you have COVID-19 symptoms or have been exposed to someone with COVID-19, we recommend you be tested. You can [check your symptoms](#) and determine if testing is needed. To find a testing site near you, visit [NC DHHS's Find My Testing Place](#).

Turnaround Times for Testing remains between 2 and 4 days. NC DHHS provides data on testing turnaround times. This data is updated daily and can be found [here](#).

Free COVID-19 Testing at AppHealthCare by Appointment. Next week we will offer testing on Monday and Thursday. Please do not just show up



for testing. We request that you schedule an appointment through our [website](#) or by calling our COVID-19 Call Center at (828) 795-1970.

Testing is also offered by appointment at Alleghany Family Practice at (336) 372-5606 and other local healthcare providers may offer testing as well.

Active Outbreaks and Clusters

Data is provided for outbreaks and clusters that are active and ongoing. The number of cases for outbreaks and clusters are current as of each Thursday at 9:00am. The case counts vary day by day as new cases are identified and as cases are moved in and out of isolation. This data may not match other reported data since this is a point in time. As we conduct outbreak and case investigations, the data included in this report are subject to change. For a current case count, visit the [AppHealthCare data dashboard](#), which is updated daily by noon.

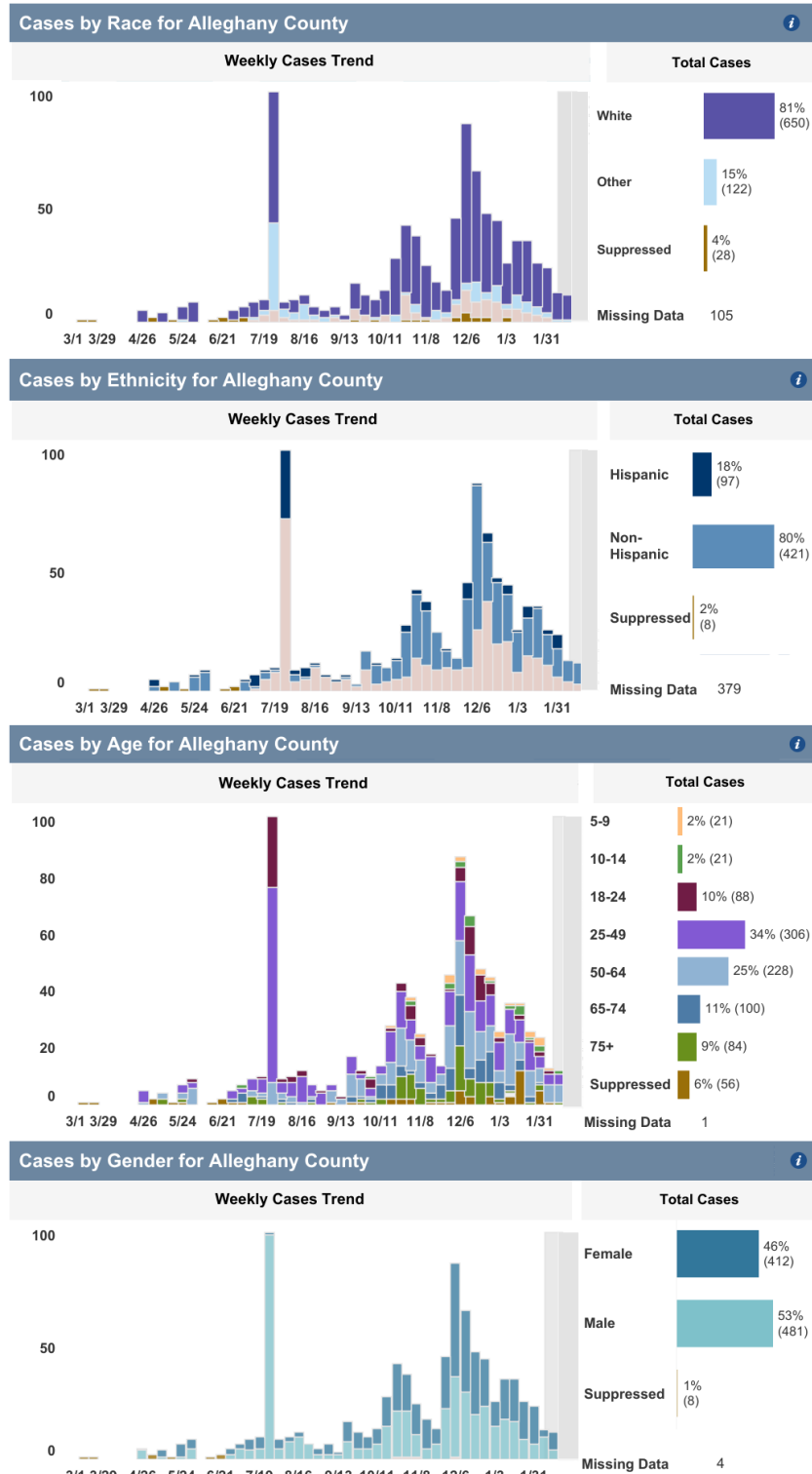
An outbreak is defined as two or more laboratory confirmed cases. A cluster is defined as a minimum of five cases with illness onsets or initial positive results within a 14-day period and plausible epidemiologic linkage between cases. An outbreak or cluster is considered over if 28 days have passed after the latest date of symptom onset in a symptomatic person or first date of specimen collection from the most recent asymptomatic person, whichever is later. Additional information on the [definitions of outbreaks and clusters](#) is provided by the North Carolina Department of Health & Human Services. NC DHHS also provides regularly updated information on [outbreaks and clusters](#).

Active Outbreaks & Clusters				
<i>Data is current as of Thursday, February 25, 9:00am</i>				
Facility or Setting Type	Facility or Setting Name	Active Cases	Cumulative Cases	Last Positive Result
<i>No active clusters/outbreaks at this time</i>				

Mitigation and Response Efforts

- Ongoing testing continues to monitor the health of residents in skilled nursing facilities
- Ongoing testing continues to monitor the health of residents in residential group home
- Educational outreach on COVID-19 prevention
- Communication, internal and external
- Positive cases are separated from others to allow for safe isolation
- Monitoring of positive cases continues with public health staff

Demographic Data from NC DHHS as of February 22nd



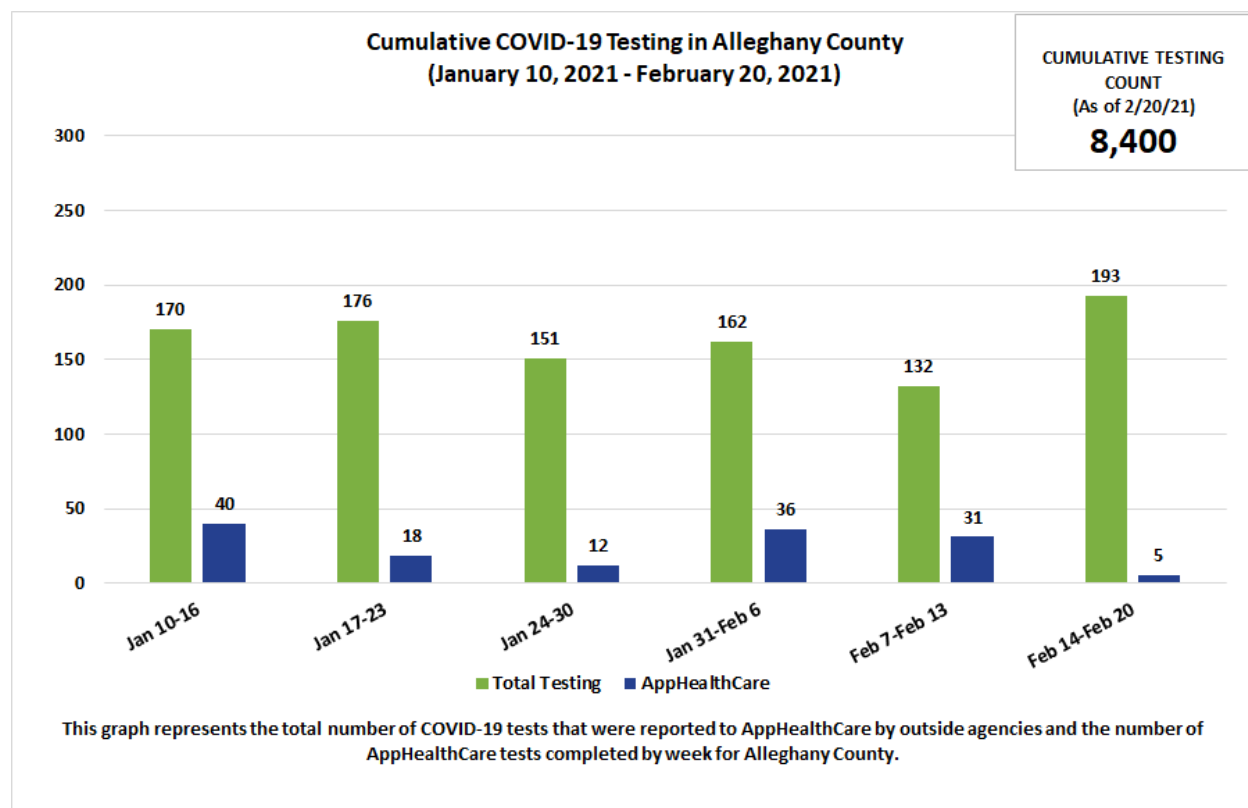
February 22, 2021

Data for Alleghany County

An important note about data context: The graphs below show the available data. Please carefully read the descriptions below the graph to understand the data limitations. The most current data is available on the [AppHealthCare dashboard](#), as the data below is past data trended.

Important Disclaimer About Data

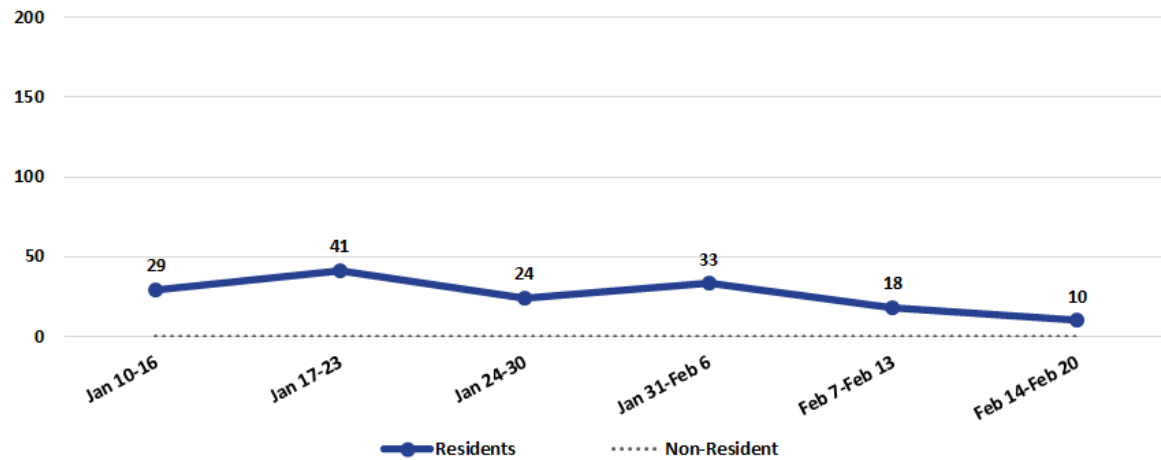
It is imperative that this report and the data contained within is understood in the appropriate context. Please, if you use this report, please be certain that the information included within is shared within the appropriate context. Doing otherwise may be damaging to the public health response efforts. There are multiple factors involved in addressing this virus, including compliance with public health control measures implemented by the local health director and referenced in NC GS 130A. These measures are imperative for limiting the spread of COVID-19. **AppHealthCare strongly advises that when data is shared for the purposes of educating the public or informing policy decisions, it should come directly from NC DHHS or AppHealthCare as it is presented with appropriate context from those directly involved in public health response.**



**Cumulative Case Count by Week in Alleghany County
(January 10, 2021 - February 20, 2021)**

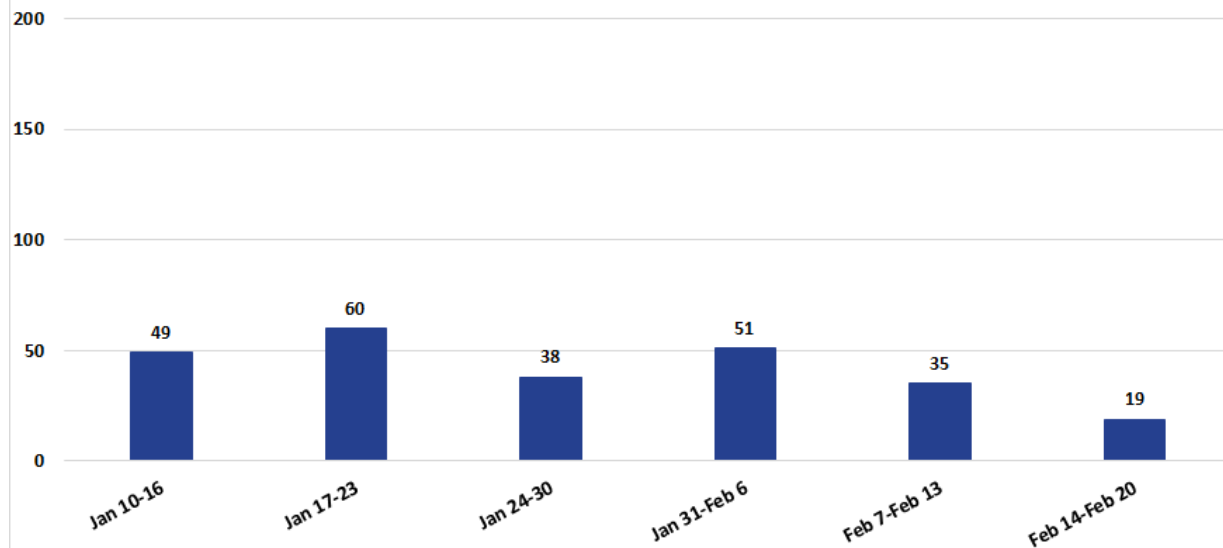
CUMULATIVE CASE
COUNT
(As of 2/20/21)

865



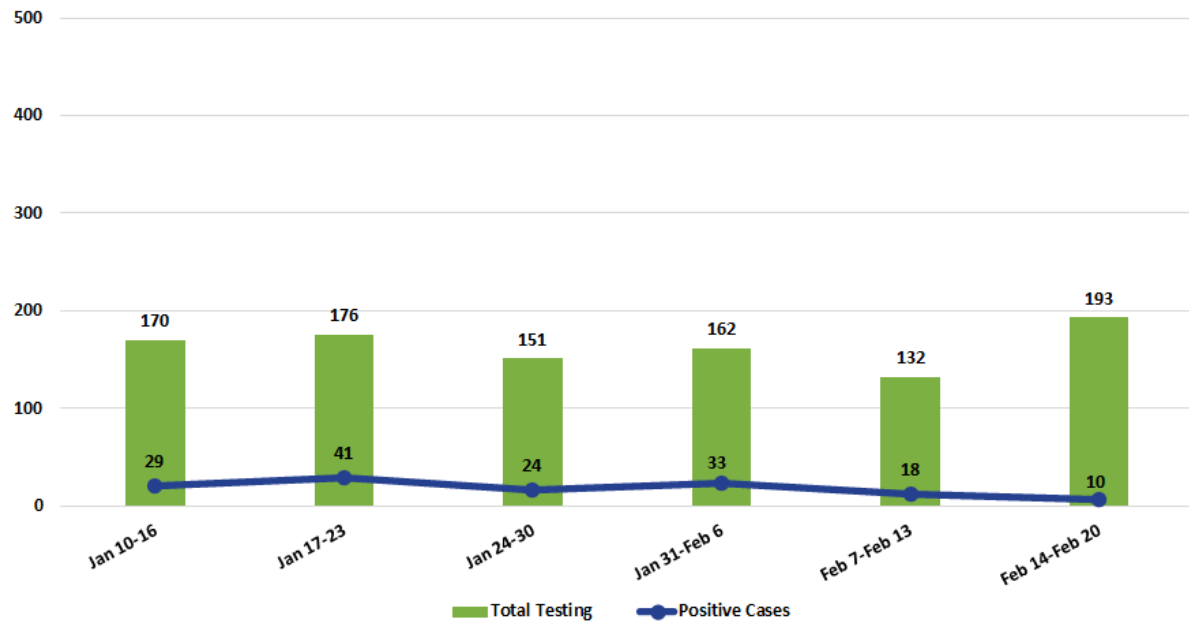
The solid navy blue line in this graph represents the number of positive COVID-19 cases among Alleghany County residents by week. This graph also shows the number of non-residents that have tested positive for COVID-19 but reside in another county.

**Number of Active Positive Cases by Week in Alleghany County
(January 10, 2021 - February 20, 2021)**



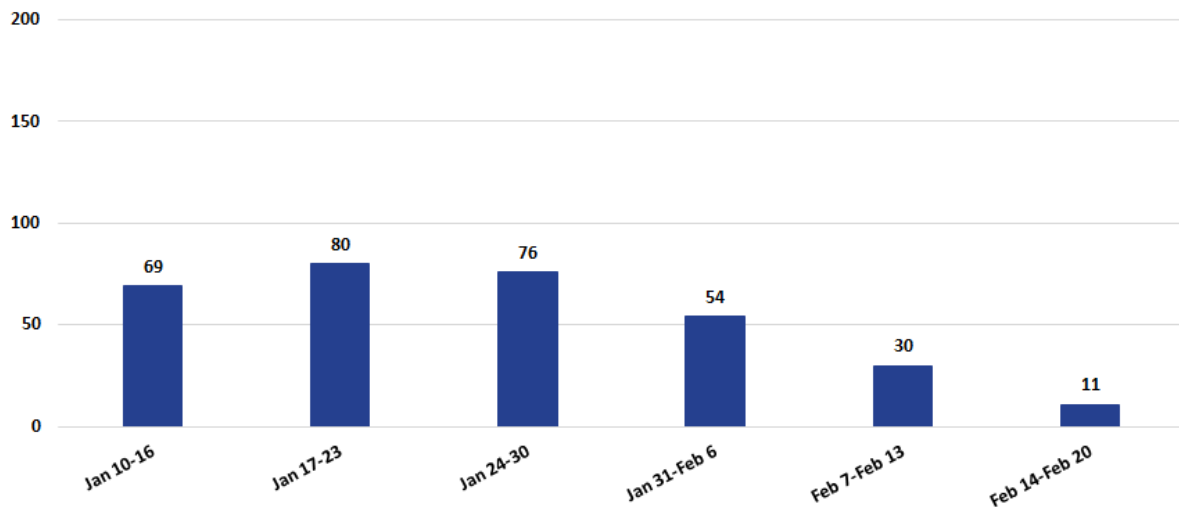
The graph represents the number of active COVID-19 positive cases by week in Alleghany County. A positive COVID-19 case is considered active for ten days after the initial positive test result.

**Total Weekly Tests Reported vs. Weekly Positive Case Count in Allegheny County
(January 10, 2021 - February 20, 2021)**



This graph represents the number of COVID-19 positive cases by week in Allegheny County compared to the total number of reported tests that were completed by AppHealthCare and outside agencies each week in Allegheny County.

**Number of People Being Actively Monitored by Week in Allegheny County
(January 10, 2021 - February 20, 2021)**



This graph represents the total number of Allegheny County residents that AppHealthCare staff have monitored due to being exposed to a confirmed COVID-19 case. Individuals are notified and asked to quarantine and monitor for symptoms for fourteen days.

Additional data can be found on [AppHealthCare's data dashboard](#). This data is updated each day around noon.

Alleghany (336) 372-5641 | Ashe (336) 246-9449 | Watauga (828) 264-4995

AppHealthCare COVID-19 Call Center (828) 795-1970

General COVID-19 Questions: preparedness@apphealth.com

Media inquiries: media@apphealth.com

www.AppHealthCare.com and follow us on Facebook & Twitter

